

Press Release

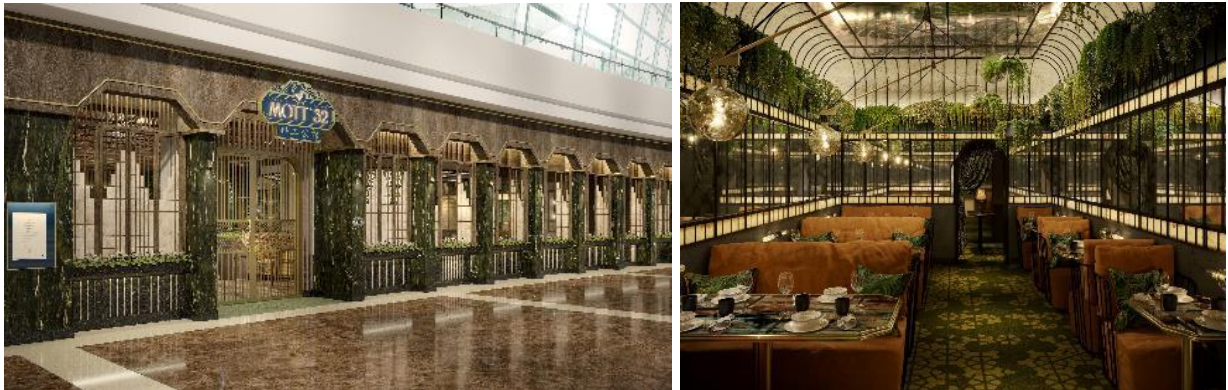


FOR IMMEDIATE RELEASE

Marina Bay Sands welcomes Hong Kong's iconic Mott 32

Integrated resort to unveil a new chapter of fine Chinese cuisine by award-winning restaurant group in early 2020

Singapore (17 June 2019) – Marina Bay Sands is excited to introduce Mott 32, Hong Kong's multi-award-winning¹ contemporary Chinese restaurant, to Singapore in a partnership with restaurant group Maximal Concepts. Set to unveil in early 2020, Mott 32 Singapore will mark the Hong Kong based restaurant group's first foray into Singapore, and its fifth international outpost after locations in Hong Kong, Vancouver, Seoul, and Las Vegas.



Mott 32 Singapore's design is inspired by Singapore's reputation as a garden city, with a colour palette that draws upon the flavour-forward menu

The acclaimed menu will showcase time-honoured Chinese recipes handed down from generations, combined with progressive cooking techniques. Paired with an exceptional mixology programme and a stunning ambience designed by award-winning interior designer Joyce Wang, an experience at Mott 32 is truly one of a kind.

¹ Refer to [full list](#) of accolades.

Press Release



The name Mott 32 comes from New York's first Chinese convenience store that opened in 1891 at 32 Mott Street, which served as the nucleus for what is now a vibrant Chinatown in one of the most exciting cities in the world. Mott 32 is thus a celebration of Hong Kong culture and culinary tradition, representative of a modern Chinese city.

Christine Kaelbel-Sheares, Vice President of Food & Beverage, Marina Bay Sands, said, "We are gearing up to welcome Mott 32 to our dynamic line-up of gastronomic experiences. Mott 32 has its own unique identity in embracing tradition through innovative cuisine and a bold bar programme. It will elevate Singapore's dining scene and offer guests a dramatic theatrical dining experience like no other."



Savour Mott 32's award-winning cuisine, such as the (from L to R) **Apple Wood Roasted Peking Duck with Mott 32's "Signature Cut"** and the **Signature Smoked Black Cod**

Led by Maximal Concepts' Group Executive chef Lee Man-Sing – who held two Michelin-stars in his previous role – Mott 32's culinary team meticulously sources for the finest ingredients from around the world, allowing the authentic flavors of Cantonese, Szechuan, and Beijing cuisines to shine. Signature dishes from the original Mott 32 menu will be featured on the Singapore menu, including the *Apple Wood Roasted Peking Duck with Mott 32's "Signature Cut"*, *Barbecue Pluma Iberico Pork Glazed With Yellow Mountain Honey*, *Iberico Pork With Soft Quail Egg And Black Truffle Siu Mai*, as well as the *Crispy Triple Cooked Wagyu Beef Short Ribs*.

Malcolm Wood, Global Managing Director of Maximal Concepts, said, "We are extremely excited to be bringing Mott 32 to Singapore with Marina Bay Sands. This opening will mark our restaurant's fifth international branch, which is a hugely significant milestone for us as a company. We have put together something really special for our Singapore branch, with our food and our design making this location very unique in the Mott 32 family. We hope to deliver a luxurious yet totally authentic Chinese experience, and we can't wait to share it with Singapore!"

Press Release



The design of every Mott 32 location tells a cohesive story of East meets West through a blend of industrial New York design and classical Chinese décor. Each restaurant's interior design possesses its own individual personality, featuring distinct local elements of its host city. At Mott 32 Singapore, the design references Singapore's geographical and cultural proximity to Hong Kong, celebrating the shared history between the two Asian metropolises. This connection is reflected in the design of the restaurant, where elements reminiscent of Hong Kong are seamlessly interwoven with a design identity created just for Singapore.

At Mott 32 Singapore, Joyce Wang Studio pays tribute to the balmy evenings spent outdoors with family in this Garden City. The studio's palette draws on the flavours of the menu; umami, spice and citrus. In celebration of Singapore's botanics, rich foliage and flora have been brought into Mott 32 Singapore through illustrations on the chinoiserie backdrop, against a play of black and green terrazzo lining the floors. Hand-painted lanterns are suspended along the perimeter of the bar amidst a green wall elevation.

Located at B1-42/43/44, Galleria Level, The Shoppes at Marina Bay Sands, the 149-seater Mott 32 will be open for lunch and dinner daily. The restaurant, which spans over 7,000 square feet, will also house a private dining room for an intimate dining experience. For more information, please visit <https://www.marinabaysands.com/restaurants/mott32.html>.

###

About Marina Bay Sands Pte Ltd

Marina Bay Sands is the leading business, leisure and entertainment destination in Asia. It features large and flexible convention and exhibition facilities, 2,560 hotel rooms and suites, the rooftop Sands SkyPark, the best shopping mall in Asia, world-class celebrity chef restaurants, a theatre and an outdoor event plaza. Completing the line-up of attractions is ArtScience Museum at Marina Bay Sands which plays host to permanent and marquee exhibitions. For more information, please visit www.marinabaysands.com

About Mott 32

Mott 32 represents modern Hong Kong as well as a new chapter of Chinese dining. Named after the famed convenience store on 32 Mott Street in New York, the restaurant captures the dynamism of NYC's vibrant Chinatown and the bravery of its immigrants. It is a restaurant that embodies the Chinese culture and philosophy that has been shaped from generation-to-generation. It embraces flavours and ingredients from around China and the world and delivers it as home cooking should be, in a more rustic and honest way.

Website: www.mott32.com

For Media Enquiries

Erica Ng (+65) 6688 1013 / erica.ng@marinabaysands.com
Zimin Foo (+65) 6688 3047 / zimin.foo@marinabaysands.com

Download hi-res images via [this link](#).