

## ARTSCIENCE MUSEUM KICKSTARTS THE YEAR WITH AN INNOVATIVE NEW SEASON

The Museum's 2025 programming slate includes two Asian premieres and a groundbreaking new learning centre

Singapore (22 January 2025) —ArtScience Museum is launching the year with an ambitious line-up of exhibitions and programmes. At the heart of this announcement is a new season titled *Mind and Body: The Art and Science of Being Human* alongside the upcoming ArtScience Laboratory – a dedicated state-of-the-art learning centre. Together, these initiatives reflect the Museum's unique mission to inspire curiosity and creativity at the intersection of art, science and technology, while addressing some of the most important questions of our time.

Running from January to July 2025, the *Mind and Body* season celebrates the human potential and experience by delving into the complex relationship between mind and body. This is explored through newly-added installations by teamLab as well as two exhibitions making their Asian debut at ArtScience Museum, which will feature an immersive journey through the human mind, and a major retrospective of one of fashion's most radical stars.

"At a time dominated by global conversations about artificial intelligence and its implications, *Mind and Body* offers a timely exploration of what it means to think, feel, and exist as human beings. This season is designed for audiences to engage deeply with the interplay of thought, sensation, and identity, and imagine new possibilities. Headlining it are the Asian premieres of two exhibitions – *Mirror Mirror: Journey Into the Mind* and *Iris van Herpen: Sculpting the Senses*, which are for everyone who shares our curiosity about what it means to be human," said Honor Harger, Vice President of ArtScience Museum.

"Simultaneously, the launch of ArtScience Laboratory marks the most significant new permanent development at the Museum in over a decade. Its opening next month will create

PRESS RELEASE | FOR IMMEDIATE RELEASE

a step change in how we engage with the next generation of artists, scientists, and creative thinkers,” Harger added.

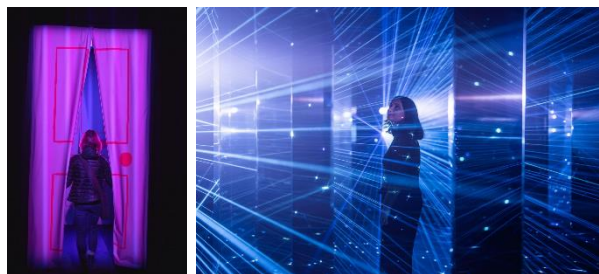
### New installations by teamLab *Future World: Where Art Meets Science*



*Dissipative Figures – Human, Light in Dark and 1000 Birds, Light in Dark*

Marking the start of the *Mind and Body* season are two newly-added artworks by international art collective teamLab in ArtScience Museum’s permanent exhibition *Future World: Where Art Meets Science*. As part of a series titled *Dissipative Figures*, these mesmerising digital installations explore the idea that all living things are connected. In particular, *Dissipative Figures – Human, Light in Dark* visualises the energy flow between a body and its surroundings, portraying the energy dissipating from a human figure as luminous traces. In this rendition at ArtScience Museum, the human figure is suspended mid-air, evoking a sense of spirituality and transcendence.

### *Mirror Mirror: Journey Into the Mind*



*L to R: One of the doors that visitors can enter to begin their journey; the Forest of Echoes room*

Opening on 1 March, *Mirror Mirror: Journey Into the Mind* has been created by Moment Factory, an international studio redefining immersive experiences and human connections,

PRESS RELEASE | FOR IMMEDIATE RELEASE

for ArtScience Museum. Blending cutting-edge technology with creative artistry, this vibrant exhibition will invite visitors to choose their own path through eight rooms featuring interactive multi-media installations. Each room will reveal different facets of the inner world of human minds – from memory, perception and dreams to consciousness and ego, making these invisible workings of the mind visible through a world of art and immersion.

### *Iris van Herpen: Sculpting the Senses*



*L to R: Iris van Herpen / Netherlands b.1984 /Hydrozoa dress; Sensory Seas dress and Nautiloid dress; Morphogenesis dress from the 'Sensory Seas' collection 2020 / © David Uzochukwu*

The *Mind and Body* season culminates with the Asian debut of *Iris van Herpen: Sculpting the Senses*. Opening on 15 March, this landmark retrospective of the Dutch designer's visionary work is based on an original exhibition designed by Musée des Arts Décoratifs, Paris. Famed for merging traditional *haute couture* techniques with digital technologies such as 3D printing and laser cutting, van Herpen's garments draw inspiration from a wide variety of disciplines including dance, art, science, technology, nature and philosophy.

*Iris van Herpen: Sculpting the Senses* is presented in collaboration with Musée des Arts Décoratifs in Paris, France, and marks van Herpen's first solo exhibition in the region. Featuring over 90 designs across her body of work alongside natural history specimens and contemporary artworks from around the world, this one-of-a-kind showcase will navigate the body as a site for continual reimagining, transformation, and evolution.

The *Mind and Body* season is supported by complementary programmes, including the *More Than Human* performance lecture series, a science fair showcasing neuroscience and

PRESS RELEASE | FOR IMMEDIATE RELEASE

natural history, and a film series at ArtScience Cinema exploring themes of identity, memory, and neurodivergence.

For more information and updates on the upcoming exhibitions, programmes and ticket sales, please visit [www.marinabaysands.com/museum/events/mind-and-body-season.html](http://www.marinabaysands.com/museum/events/mind-and-body-season.html).

### **Introducing ArtScience Laboratory**

Opening in February, ArtScience Laboratory is a permanent centre for visitors to learn at the intersection of art, science, and technology. Located at Basement 2, the 320sqm facility will offer a vibrant programme designed to spark curiosity, creativity, and innovation among learners of all ages.

ArtScience Laboratory reflects the Museum's unique role as a bridge between disciplines, embracing the philosophy that creativity and scientific inquiry are interconnected. Drawing on over a decade of expertise in art-science education, the centre will immerse students, educators, families, and communities in hands-on, experiential learning through sustainability-focused workshops, digital coding sessions, and art-making inspired by scientific principles.

The unique learning experiences in ArtScience Laboratory will show how art and creativity can actively assist in learning about science and technology, and how an understanding of science and technology can enrich encounters with art.

"ArtScience Laboratory embodies our mission to connect art, science, and technology in ways that inspire and educate. This new learning centre strengthens our commitment to empowering future generations of creative thinkers by making interdisciplinary learning central to everything we do," said Harger.

For more details on ArtScience Laboratory, please stay tuned to [www.marinabaysands.com/museum/events/artscience-laboratory.html](http://www.marinabaysands.com/museum/events/artscience-laboratory.html).

+++

### **About Marina Bay Sands Pte Ltd**

Since its opening in 2010, Marina Bay Sands has stood as an architectural marvel and the crown jewel in Singapore's skyline. Home to the world's most spectacular rooftop infinity pool and approximately 1,850 rooms and suites, the integrated resort offers exceptional dining, shopping, meeting and entertainment choices, complete with a year-round calendar of signature events.

Marina Bay Sands is dedicated to being a good corporate citizen to serve its people, communities and environment. It drives social impact through its community engagement programme, Sands Cares, and leads environmental stewardship through its global sustainability programme, Sands ECO360.

For more information, please visit [www.marinabaysands.com](http://www.marinabaysands.com)

### **About ArtScience Museum**

ArtScience Museum is a major cultural institution in Singapore that explores the intersection between art, science, technology and culture. It is the cultural component of Marina Bay Sands. Since its opening in February 2011, ArtScience Museum has staged large-scale exhibitions by some of the world's major artists, including Leonardo da Vinci, M.C. Escher, Salvador Dalí, Andy Warhol and Vincent Van Gogh, as well as exhibitions that explore aspects of science and technology - including particle physics, big data, robotics, palaeontology, marine biology and space science. For more information, please visit [www.marinabaysands.com/museum.html](http://www.marinabaysands.com/museum.html)

### **Media Enquiries**

Julia Tan: +65 8380 4031 / [julia.tan@marinabaysands.com](mailto:julia.tan@marinabaysands.com)

Tan Jou Teng: +65 8380 4247 / [jouteng.tan@marinabaysands.com](mailto:jouteng.tan@marinabaysands.com)

Sarina Pushkarna: +65 9298 5728 / [sarina.pushkarna@marinabaysands.com](mailto:sarina.pushkarna@marinabaysands.com)

For hi-res images, please click [\[here\]](#) (Credit as indicated in the captions)