

Press Release



FOR IMMEDIATE RELEASE

The spellbinding World of Studio Ghibli comes to life at ArtScience Museum

The exhibition marks the Studio's first official showcase in Singapore



L to R: Visitors will be greeted by a sculpture from Ponyo on the Cliff by the Sea (2008) placed within ArtScience Museum's lily pond; entrance to The World of Studio Ghibli exhibition at Basement 2 of the museum

SINGAPORE (2 October 2024) – For nearly four decades, Studio Ghibli has captivated the hearts and imaginations of audiences worldwide with its rich narratives, visual splendour and relatable characters. From 4 October, fans across Singapore and the region will be able to experience the Studio's timeless treasure at ArtScience Museum and join iconic characters on an unforgettable adventure through the fantastical realms of films such as *My Neighbour Totoro* (1988), *Kiki's Delivery Service* (1989), and *Spirited Away* (2001).

The World of Studio Ghibli is organised by ArtScience Museum under the license of award-winning animation powerhouse Studio Ghibli. It is the first official Studio Ghibli exhibition in Singapore, and one of the largest exhibitions to be shown at ArtScience Museum, transforming 11 galleries spanning two levels. At the heart of the exhibition are 16 large-scale, immersive theatrical sets meticulously crafted on-site by a team of Japanese artists. The theatrical sets depict iconic scenes from 11 Studio Ghibli films, giving visitors a truly enchanting experience. Handpicked by Studio Ghibli, each piece reflects the same attention to craftsmanship and narrative depth that permeates the Studio's films.

"*The World of Studio Ghibli* at ArtScience Museum is a homage to one of the greatest animation studios of our time. This exhibition is a cultural milestone for Singapore, offering our visitors a deeply engaging experience and an exclusive view of artworks never-before-seen in Singapore.

Press Release



What makes this exhibition particularly remarkable is the presence of original artworks and installations crafted on-site by a specialised team of builders from Japan who were selected by Studio Ghibli. The sculptures and theatrical sets in the show authentically showcase the Ghibli universe, bringing to life the rich, textured worlds of the Studio's films. With many of its films also featuring humanist and ecological themes which align with ArtScience Museum's own vision to explore the intersection of art, science, and technology while fostering a deeper understanding of nature and our place within it, we felt that this exhibition would resonate powerfully with our visitors. As such, we have been striving to bring a Studio Ghibli exhibition to our shores for many years," said Honor Harger, Vice President of ArtScience Museum at Marina Bay Sands.

"We hope that this landmark exhibition sparks joy, curiosity, and inspires people from all walks of life whether they are longtime fans of Studio Ghibli or experiencing these films for the first time," she added.

"We are very happy that the first Studio Ghibli exhibition in Singapore will be held at ArtScience Museum – a place that attracts people from all over the world. Since the Studio began operations in 1985, we aimed to create works that were meaningful to produce, enjoyable as entertainment, and appealing to all generations. The large-scale installations in this exhibition have been created with a focus on size and realism, allowing visitors to immerse themselves in the world of our films. For those who have seen our films, this exhibition offers a chance to relive those experiences in a different way. And for those who have yet to see them, the carefully crafted sets can serve as a gateway to our films, showcasing the unique characteristics of our works. With many photo spots, I believe this exhibition will be enjoyed by people from all walks of life, just like our films," said Shinsuke Nonaka, Vice President of Business and Legal Affairs at Studio Ghibli.

Founded in Japan in 1985 by directors Hayao Miyazaki and Isao Takahata, alongside producer Toshio Suzuki, Studio Ghibli has created 25 visually sumptuous feature films that combine masterful hand-drawn visuals, intricate world-building, rich characters, and universal themes. Studio Ghibli is renowned for its enchanting films which range from magical adventures to charming tales based on everyday life. It has also left an indelible mark on the animation industry, with its films garnering critical acclaim within and beyond Japan, inspiring generations of animators and storytellers. Seven films have received Academy Award nominations, with *Spirited Away* (2001) and most recently, *The Boy and the Heron* (2023), having won Best Animated Feature Film. *The World of Studio Ghibli* features both films.

Additionally, Studio Ghibli has paved the way with its groundbreaking portrayal of strong, independent, and complex female protagonists. From San in *Princess Mononoke* (1997), who grapples with the conflict between human progress and environmental preservation, to Chihiro in *Spirited Away* (2001), whose journey is one of self-discovery, the Studio's heroines are nuanced and relatable. Meanwhile, characters like Kiki in *Kiki's Delivery Service* (1989), Sophie in *Howl's Moving Castle* (2004), and Nausicaä in *Nausicaä of the Valley of the Wind* (1984) face their fears, confront adversities, and emerge empowered. With these films having inspired

Press Release



generations of women and girls, the exhibition complements ArtScience Museum's 'Year of Extraordinary Women', which has celebrated the stories of those who have challenged narratives, defied expectations, and transcended conventions.

Highlights from *The World of Studio Ghibli*

Upon arrival at ArtScience Museum, visitors will be greeted by a giant sculpture from *Ponyo on the Cliff by the Sea* (2008) placed dramatically within the museum's lily pond. The journey continues at the Basement 2 galleries with striking immersive installations depicting scenes from *Howl's Moving Castle* (2004), *Castle in the Sky* (1986) and *My Neighbour Totoro* (1988). Meanwhile, the Level 3 galleries feature more original sculptures and theatrical sets from beloved films including *Nausicaä of the Valley of the Wind* (1984), *Porco Rosso* (1992), *Pom Poko* (1994), *Princess Mononoke* (1997), *Kiki's Delivery Service* (1989), *Spirited Away* (2001), and *The Boy and the Heron* (2023).



L to R: Some of the large-scale installations recreate memorable scenes such as Chihiro standing in front of the bathhouse in *Spirited Away* (2001), Porco Rosso's remote island hideout in *Porco Rosso* (1992), and Pazu rescuing Sheeta in *Castle in the Sky* (1986)

The exhibition offers numerous opportunities for fans to step into their favourite scenes and be transported directly into Studio Ghibli's dazzling adventures and captivating worlds. Visitors are invited to wander through the lush forest of *Princess Mononoke*, explore Howl's castle, venture down a grassy tunnel to Totoro's cave, become a customer of Gütikiipänjä bakery where Kiki and her cat Jiji work, hop on a train with No-Face and wait in the rain with Totoro.



L to R: A variety of box art installations which offer a closer look at scenes including the ominous tunnel guarded by the stone statue in *Spirited Away* (2001) and old Sophie catching her reflection in the mirror. Some of them are also interactive, such as one where visitors can spin wheels to see the Tanuki from *Pom Poko* (1994) shapeshift

Press Release

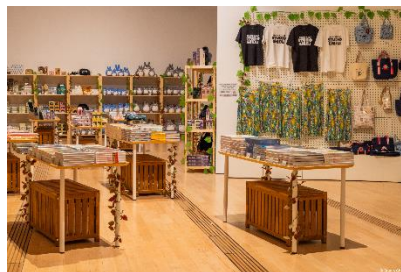


Various art installations also drop visitors right into the middle of memorable and exciting sequences – from fleeing with Pazu and Sheeta along the railway tracks during a thrilling chase scene in *Castle in the Sky* (1986), to becoming part of the airship scene from *Kiki's Delivery Service* (1989), where visitors can take on the role of Tombo hanging from the airship or Kiki rescuing him on her flying broomstick.

In addition to the theatrical sets, *The World of Studio Ghibli* includes 16 box art installations created by the Studio. These original works of art, produced specially for the exhibition, offer small portals into various frames from the movies, allowing visitors to take a closer look at intricate details from the films.

First presented in Japan in 2013 before travelling to South Korea, Taiwan, Hong Kong and Bangkok, this iteration of *The World of Studio Ghibli* at ArtScience Museum has been redeveloped and includes many new and never-seen-before additions. It features movie frames transformed into large-scale graphics, and objects from the films brought to life as props for the first time. Visitors can dive deeper into the Studio's renowned world-building and discover elements they might have missed onscreen, as well as keeping a look out for easter eggs such as local delicacies placed amongst No-Face's spread of food.

Bring the treasure of Studio Ghibli home with special keepsakes



Visitors can look forward to bringing home a special souvenir to remember their experience at the retail store on Level 3 of ArtScience Museum

Both fans and newcomers can forge meaningful memories and bring home souvenirs from *The World of Studio Ghibli*. Unique to this iteration of the show are three special in-gallery activity spaces conceived by ArtScience Museum's Education team that embody the moments of reflection depicted in Ghibli's films. Visitors are invited to slow down, pause and engage in activities ranging from drawing soot sprites featured in *Spirited Away* (2001), writing heartwarming notes of gratitude inspired by Totoro, and making their own animation device called a thaumatrope with characters from *My Neighbour Totoro* (1988).

The World of Studio Ghibli also ends with a retail store on Level 3 that will offer a wide variety of official merchandise.

Press Release



Complementary programmes for *The World of Studio Ghibli*

The exhibition will be accompanied by a series of programmes that provide deeper insights into Studio Ghibli's storytelling and animation techniques. On 5 October, an opening symposium featuring Atsushi Okui (Director of Digital Imaging) and Shinsuke Nonaka (Vice President of Business and Legal Affairs) from Studio Ghibli, will present a lively discussion on the Studio's production processes including composite and effect works as well as rare first-hand stories of their experiences working behind-the-scenes of these films.

ArtScience Cinema will also be offering free screenings of two documentaries on Level 4 of the Museum: *Kazuo Oga – Ghibli's Image Artisan – The Artist Who Made Totoro's Forest* (2007) and *The Kingdom of Dreams and Madness* (2013), directed by Mami Sunada which will provide a rare glimpse into the inner workings of one of the most celebrated animation houses of all time.

Visitors are encouraged to stay tuned for more updates as they can expect more exciting programmes and activations during the exhibition run, including a film festival featuring several Studio Ghibli films that will be screened in theatres islandwide.

The World of Studio Ghibli will run from 4 October 2024 to 2 February 2025.

For more details on *The World of Studio Ghibli* and its programmes, please visit <https://www.marinabaysands.com/museum/exhibitions/studio-ghibli.html>

###

About Studio Ghibli

Studio Ghibli was founded in 1985 by animated film directors Isao Takahata and Hayao Miyazaki, and has produced twenty-five feature-length films. Most Studio Ghibli films ranked number one at the box office in Japan in the year in which they were released. The Studio's *Spirited Away* (2001), *Howl's Moving Castle* (2004) and *Princess Mononoke* (1997) are among Japan's top 10 grossing films. Studio Ghibli films have garnered numerous awards and critical acclaim from film critics and animation specialists around the world. *Spirited Away* was awarded the Golden Bear as the Best Feature Film at the 52nd Berlin International Film Festival and won the 75th Academy Award® for Best Animated Feature Film. In 2001, Ghibli Museum, Mitaka designed by Hayao Miyazaki, opened in Mitaka, Tokyo. *The Wind Rises* (2013), *The Tale of The Princess Kaguya* (2013), *When Marnie Was There* (2014) and *The Red Turtle* (2016) earned the studio four consecutive nominations for the Academy Awards® for Best Animated Feature Film, and *Earwig and the Witch* (2020) was an official selection for the 73rd Cannes Film Festival. In 2022, Ghibli Park, a park that represents the world of Studio Ghibli, opened in Nagakute, Aichi. The studio's latest film, *The Boy and the Heron* (2023) was awarded the Golden Globe Award, the BAFTA Film Award and the Academy Award® for Best Animated Feature Film in 2024. The studio received Honorary Palme d'Or at the 77th Cannes Film Festival.

About Marina Bay Sands Pte Ltd

Marina Bay Sands is Asia's leading business, leisure and entertainment destination. The integrated resort features Singapore's largest hotel with approximately 1,850 luxurious rooms and suites, crowned by the spectacular Sands SkyPark and iconic infinity pool. Its stunning architecture and compelling programming, including state-of-the-art convention and exhibition facilities, Asia's best luxury shopping mall, world-class dining and entertainment, as well as cutting-edge exhibitions at ArtScience Museum, have transformed the country's skyline and tourism landscape since it opened in 2010.

Press Release



Marina Bay Sands is dedicated to being a good corporate citizen to serve its people, communities and environment. As one of the largest players in hospitality, it employs more than 11,500 Team Members across the property. It drives social impact through its community engagement programme, Sands Cares, and leads environmental stewardship through its global sustainability programme, Sands ECO360.

For more information, please visit www.marinabaysands.com

About ArtScience Museum

ArtScience Museum is a major cultural institution in Singapore that explores the intersection between art, science, technology and culture. It is the cultural component of Marina Bay Sands. Since its opening in February 2011, ArtScience Museum has staged large-scale exhibitions by some of the world's major artists, including Leonardo da Vinci, M.C. Escher, Salvador Dalí, Andy Warhol and Vincent Van Gogh, as well as exhibitions that explore aspects of science and technology – including particle physics, big data, robotics, palaeontology, marine biology and space science. For more information, please visit www.marinabaysands.com/museum.html

Media Enquiries

Julia Tan: +65 8380 4031/ julia.tan@marinabaysands.com
Sarina Pushkarna: +65 9298 5728/ sarina.pushkarna@marinabaysands.com

For hi-res images, please click [here](#). (Credit images as indicated in the captions)